

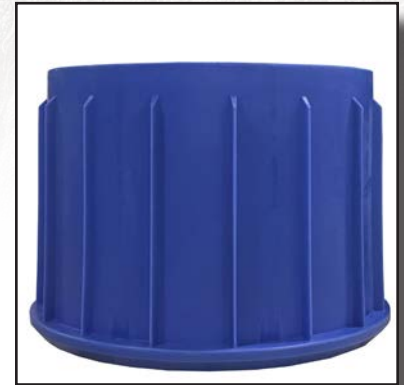
Channeled Inlets



Sanitary Bottom-Base



Cone



Riser

PLASTIC MANHOLES

MODEL	BODY DIAMETER	NECK DIAMETER	OVER ALL HEIGHT	DESCRIPTION
CC-4828	48"	28"	55"	CENTER CONE 55" TALL
CC-3628	48"	28"	42"	CENTER CONE 42" TALL
CC-3624	48"	24"	42"	CENTER CONE 24" NECK REDUCER
OC-4828	48"	28"	55"	OFFSET CONE 55" TALL
OC-3628	48"	28"	45"	OFFSET CONE 45" TALL
OC-3624	48"	24"	45"	OFFSET CONE 24" NECK REDUCER
R-24 RISER	48"	N/A	24"	27" TALL RISER
R-36 RISER	48"	N/A	36"	38" TALL RISER
RB-36	48"	N/A	36"	ROUND BOTTOM BASE
SB-22	48"	N/A	22"	SANITARY BOTTOM BASE WITH 6" & 8" OUTLETS
SB-30	48"	N/A	30"	30" SANITARY BOTTOM BASE 6", 8" OUTLETS
SB-42	48"	N/A	42"	42" SANITARY BOTTOM BASE 6", 8" OUTLETS
LSB-30	48"	N/A	30"	30" LARGE SANITARY BOTTOM BASE 8", 10", & 12" OUTLETS
LSB-42	48"	N/A	42"	42" LARGE SANITARY BOTTOM BASE 8", 10", & 12" OUTLETS
PL28 LID	28"	N/A	3"	HOLLOW PLASTIC OR CONCRETE FILLED



RHINO MANHOLES by

Fibertech INC

Fibertech Inc. is a rotational molder, manufacturing high quality, custom-engineered plastic products. RHINO MANHOLES by Fibertech provide the highest level of reliability for applications varying from sewer, wastewater, landfill leachate, storm water collection systems to below grade utility inspection chambers. Using 100% virgin polyethylene plastic it offers a wide range of chemical resistance to acids and many organic compounds. Because of this resistance, attack from hydrogen sulfide, sulfuric acid and other aggressive chemicals does not occur.

- **Cones**-2 types one Center Cone and one Off-set Cone, both with 3 various sizes and heights to accommodate all applications
- **Risers**- used to adjust the height of the base and cone sections to grade
- **Bases**- Sanitary Bottom Bases, Large Sanitary Bottom Bases, and Round Bottom Bases
- **Inlets**- 5 standard inlet channels with a 2% flow molded-in will accommodate from 4" up to 12" pipe
- **Outlets**- accommodates 6", 8", 10", and 12" pipe.
- **Gaskets**- used to provide the seal between the manhole components and do not allow infiltration or exfiltration



Options

- Long/Short Center Cone
- Long/Short Offset Cone
- 24"/36" Tall Riser
- Round Bottom Base
- Sanitary Bottom Base
- 8" and 12" Base Extensions
- 6", 8" Dia. Spout
- 4"-12" Dia. Inlets
- Plastic/Concrete Lid

Standards

- High Density Polyethylene
- Molded-In Step System
- Gaskets Seals
- Base, Riser, Cone, Lid
- Flow Channels/Inlets
- H-20 Load Rating
- 0.5 inch Wall Thickness
- 28" Dia. Lid

Benefits

- Durable
- Light Weight
- Water Tight Gasket Seal
- No Infiltration/Exfiltration
- Easy Install
- Easily Modified
- Corrosion & H2S Resistant
- 100% Recyclable
- Flotation Resistant
- Variety of Option & Configurations

RHINO MANHOLES have been field tested under a variety of conditions to meet exacting design and quality standards for long life and corrosion resistance. They have been proven to outlast concrete, steel, and fiberglass manholes.