

FIBERTECH
PLASTICS



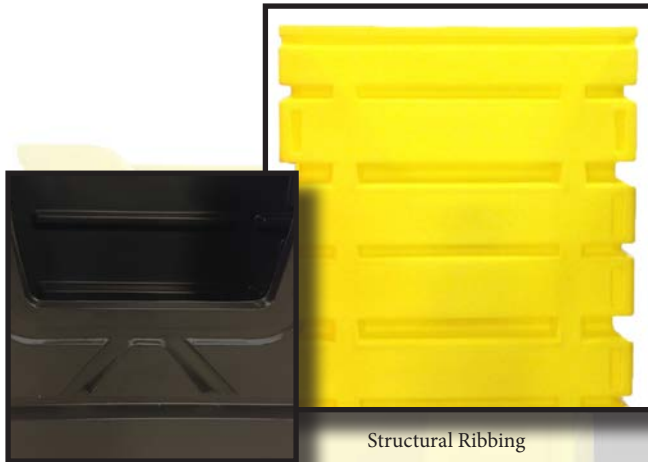
Experience the
Laundry Difference



Carts

Laundry Truck 67

It features the latest in durability design with varying wall thickness up to a nominal .25, maintaining an ease of mobility when fully loaded.



Structural Ribbing



Metal Powder Coated Base



- Powder coated steel base.
- Rust resistant, non-corrosive.
- Single wall one-piece design.
- Easy to clean.
- Hand & Drain Holes
- Industrial grade casters.
- Optional Lid & Door.
- Smooth interior finish.

MODEL	DIMENSIONS	CAPACITY	BUSHELS	WEIGHT
F-LT67 HD	48" X 28 1/2" X 67"	48 cu/ft 1,500lbs	38	142lbs
F-LT67 M	48" X 28 1/2" X 67"	48 cu/ft 1,200lbs	38	126lbs
F-LLT67	48" X 28 1/2" X 67"	48 cu/ft 1,000lbs	38	117lbs

Laundry Truck 70

Measuring in at only 56 inches our F-LT70 laundry truck is much shorter than our other bulk laundry carts.



- Powder coated steel base.
- Single wall one-piece design.
- Drain Holes for easy cleaning.
- Hand Holes for ease of handling
- 6" casters.
- Optional Lid & Door.



Smooth Interior

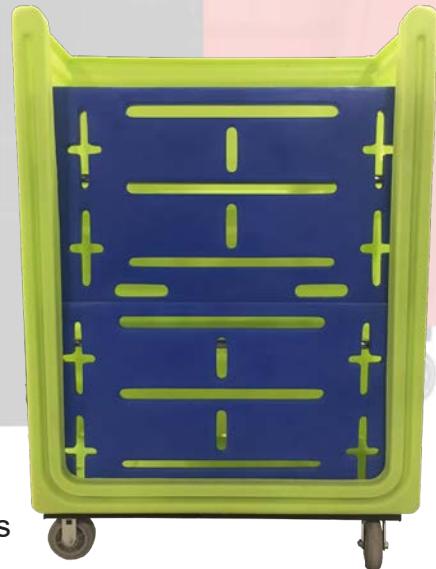
MODEL	DIMENSIONS	CAPACITY	BUSHELS	WEIGHT
F-LT70	48" X 28 1/2" X 56"	36 cu/ft 600lbs	29	102lbs

Laundry Truck 90

This truck features a convertible shelving system which can be effortlessly converted to collect dirty linens in the same cart you use to sort and deliver fresh linens, resulting in a round trip functionality.



Optional Wire Shelves



- Powder coated steel base.
- Rust resistant, non-corrosive.
- Single wall one-piece design.
- Hand & Drain Holes
- Industrial grade casters.
- Smooth interior finish.
- Removable & Non-Removable Plastic Shelves
- Removable & Non-Removable Wire Shelves

MODEL	DIMENSIONS	CAPACITY	BUSHELS	WEIGHT
F-LT90-P	48" X 28 1/2" X 68"	48 cu/ft 800lbs	38	155lbs
F-LT90-RP	48" X 28 1/2" X 68"	48 cu/ft 800lbs	38	156lbs
F-LT90-W	48" X 28 1/2" X 68"	48 cu/ft 800lbs	38	141lbs
F-LT90-RW	48" X 28 1/2" X 68"	48 cu/ft 800lbs	38	147lbs

Exchange Cart 101

The exchange cart features a unique shelf conversion system that is easily converted to a vertical position for dirty linen pick up, and then changed to a horizontal position to organize and deliver fresh linens. The solid one-piece construction can handle heavy loads of up to 800 pounds with individual shelf loads of up to 300 pounds.



Shelves lock in to hold product in.

- Rotationally molded shelves with powder coated steel bar.
- Powder coated steel base.
- Rust resistant, non-corrosive.
- Single wall one-piece design.
- Hand & Drain Holes
- Industrial grade casters.



MODEL	DIMENSIONS	CAPACITY	BUSHELs	WEIGHT
F-EC101	61" X 23 1/2" X 71"	46 cu/ft 800lbs	38	200lbs

Dome Top Cart

The dome top is the latest add-on feature for our popular F-LT67 commercial laundry carts, creating a secure, user-friendly top that functions for a variety of applications across many industries.



- Powder coated steel base.
- Rust resistant, non-corrosive.
- Easy to clean.
- Handles.
- Drain holes.
- Industrial grade casters.
- Optional Door.
- Smooth interior finish.

MODEL	DIMENSIONS	CAPACITY	BUSHEL	WEIGHT
F-LLT-DOME	48" X 28 1/2" X 78"	48 cu/ft 1,000lbs	38	137lbs

Utility Cart

The UC-Series are the next multi-purpose heavy-duty utility cart that supports a large variety of industry needs.

- Standard galvanized steel base.
- Nestable for storage and transport.
- Hard rubber casters.
- Optional Lid.

***UC12- 4" Casters**

***UC16- 4" Casters**

***UC20- 5" Casters**

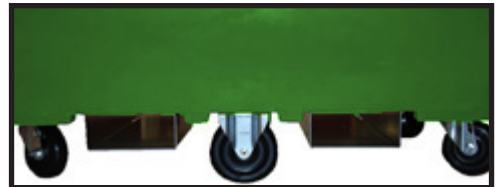


MODEL	DIMENSIONS	CAPACITY	BUSHELS	WEIGHT
UC-12	39 1/2" x 30" x 32"	15 cu/ft 500lbs	12	67lbs
UC-16	43" x 32" x 34"	20 cu/ft 500lbs	16	83lbs
UC-20	55 1/2" x 35 1/2" x 35"	25 cu/ft 500lbs	20	103lbs

Recycling Cart 38

This multipurpose collection cart is one of the most durable recycling carts in the industry.

- Molded one piece construction
- 5" rigid casters and 4" hard rubber swivel casters
- Reinforced rim
- Nestable for efficient transport
- Optional Fork Pockets
- Optional Lid



MODEL	DIMENSIONS	CAPACITY	BUSHEL	WEIGHT
RC38	43 3/4" x 28 3/4" x 40"	20cu/ft 500lbs	16	74lbs
RC38 LID	45 1/9" x 29 1/2" x 4 1/2"			17lbs

Caster Carts

Fibertech Plastics has engineered a custom caster configuration frame for our 4 Series container. This frame is designed for forklift entries that also allow the container to rotate. By adding casters to this stainless steel framed bulk container it now has the ability to be rolled for accessibility.



MODEL	OUTSIDE DIMENSIONS	CAPACITY	WEIGHT
F436 SSF	48" x 44" x 39"	30 cu/ft 225gal	159lbs
F438 SSF	48" x 44" x 41"	32 cu/ft 240gal	164lbs
F442 SSF	48" x 44" x 45"	37 cu/ft 275gal	164lbs
F445 SSF	48" x 44" x 48"	40 cu/ft 300gal	169lbs
F448 SSF	48" x 44" x 51"	42 cu/ft 325gal	189lbs

Caster Bins

We bolt flat steel plates across the channeled bottom of the 2 Series combo bins and casters are attached to allow the plastic bulk bins the ability to be rolled for better handling.



MODEL	OUTSIDE DIMENSIONS	CAPACITY	WEIGHT
F233 CC	41" x 41" x 40"	29 cu/ft 218gal	117lbs
F236 CC	47" x 43" x 43"	34 cu/ft 255gal	139lbs
F245 CC	47" x 43" x 52"	42 cu/ft 310gal	149lbs
F251 CC	43" x 43" x 58"	44 cu/ft 330gal	159lbs

Customizations



Door & Lid



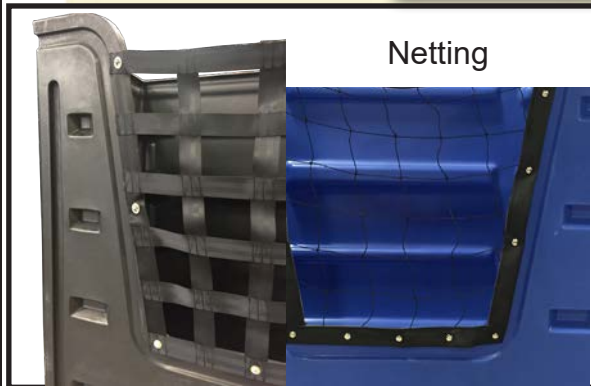
Custom Towing Hitch



Low Cut Opening



Vinyl Door Flap



Netting



Spring Loaded Lifts

Plastic Lockers

Our plastic lockers are maintenance-free and are a great alternative to metal lockers.



- Flat or sloped tops, available in three sizes.
- Sold as individual units for design and purchase flexibility.

- Individually molded unit.
- Standard drain hole for ease of cleaning.



MODEL	SHAPE	DIMENSIONS	WEIGHT	HOOKS	SHELF
12" Locker	Flat-Top	12" x 12" x 15"	6lbs.	N/A	N/A
12" Locker	Slope-Top	24.25" x 12" x 15"	8lbs.	N/A	N/A
18" Locker	Flat-Top	18" x 12" x 15"	9lbs.	N/A	N/A
18" Locker	Slope-Top	30.5" x 12" x 15"	11lbs.	N/A	N/A
36" Locker	Flat-Top	36" x 12" x 15"	15lbs	Yes	Optional
36" Locker	Slope-Top	48.5" x 12" x 15"	18lbs	Yes	Optional

Color

With 15 standard colors to choose from, you can coordinate or brand your containers. Colors do not crack, chip or fade. Virgin plastic is offered in different pigments; recycled plastic is only available in black. Colors may vary depending on the size of the container.

(Note: Due to the many variations in monitors and browsers, actual product color may vary from the images shown.)



Fibertech
Blue



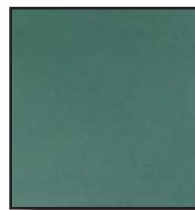
Royal Blue



Dolphin Blue



Emerald
Green



Forest Green



Safety Yellow



Safety Orange



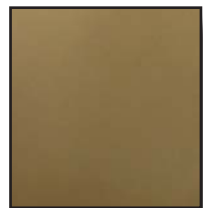
Fire Red



Brown



Tan



Suede
Leather



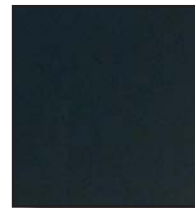
Malted Milk



Natural
Translucent



Battleship
Gray



Black

Custom colors are available in larger quantities and will require an additional upcharge. Custom or color matching can be done with a provided sample, or specific Pantone.

To request color chip samples or to find out more about custom colors, please contact Fibertech Plastics at 800-304-4600.





11744 Blue Bell Road, Elberfeld, IN 47613

www.fibertechplastics.com

800-304-4600