

BIG HOP EF-41

CENTER-DISCHARGE HOPPER BIN

Translucent

Translucent to see fill levels

Sturdy

Steel frames with Food-Grade powder coat

Ease of Use

Easy-to-use slide gate



Lid

Fully enclosed & removable

FDA-Approved

FDA-approved materials/FSMA compliant/BPA-Free

Safe for Storage

Safe for outside storage down to -20°F

** Your name/logo
* Stand pictured is optional*

Customization

Food-Grade Poly Bin

- Multiple-Use capabilities
- Customer logo option

Weight

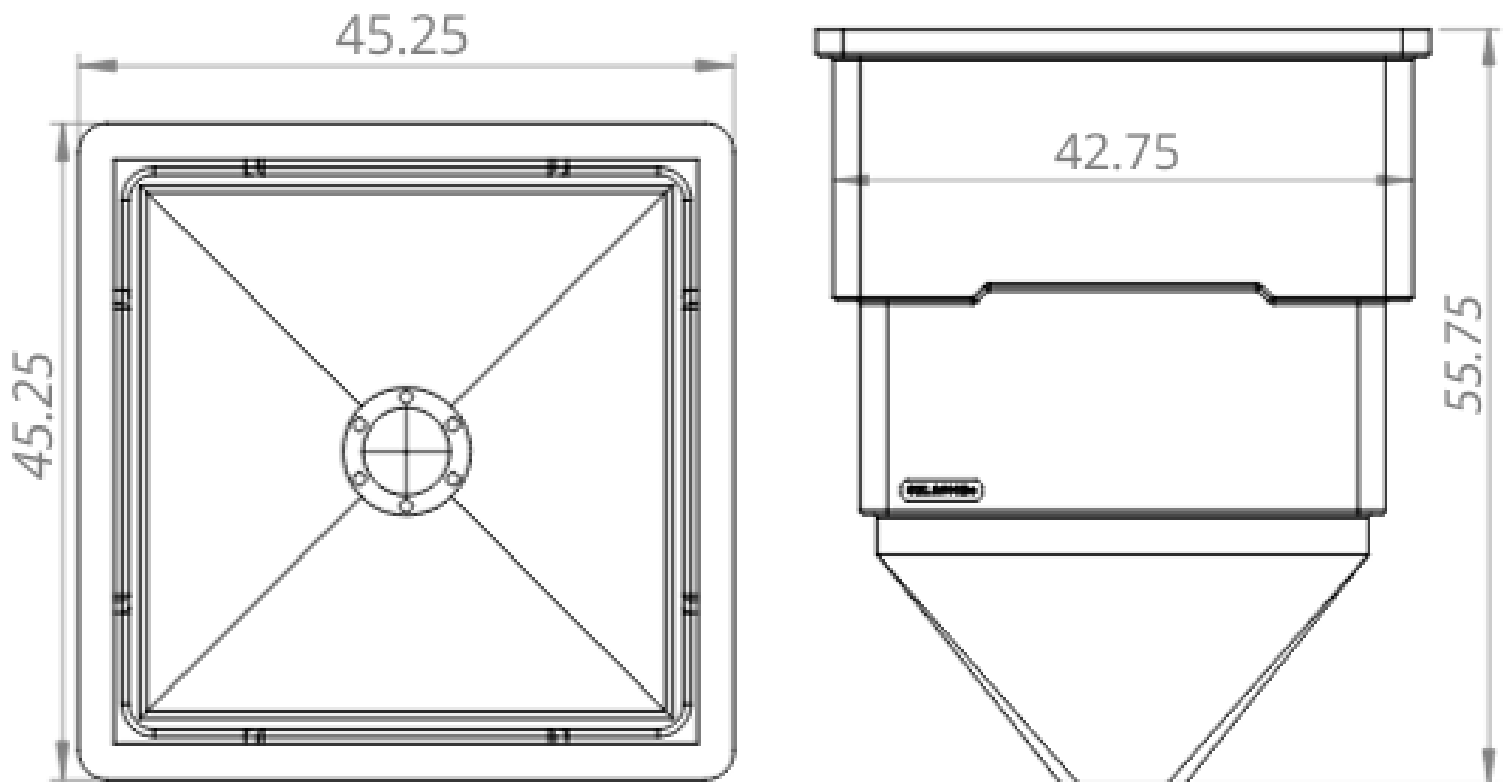
2600# maximum weight capacity. Actual amount varies depending on density of material used.

Cu. Ft., Gallons, Bushels, Liters	Weight of Container
41 Cu.Ft., 263 Dry Gal., 33 Bushels, 1161 liters	100 LBS

BIG HOP EF-41

CENTER-DISCHARGE HOPPER BIN

OUTSIDE DIMENSIONS



LIL HOP EF-6

CENTER-DISCHARGE HOPPER BIN

Translucent

Translucent to see fill levels

Sturdy

Steel frames with Food-Grade powder coat

Ease of Use

Easy-to-use slide gate



*

Lid

Fully enclosed & removable

FDA-Approved

FDA-approved materials/FSMA compliant/BPA-Free

Safe for Storage

Safe for outside storage down to -20°F

** Your name/logo*

** Stand pictured is optional*



Customization

Food-Grade Poly Bin

- Multiple-Use capabilities
- Customer logo option

Weight

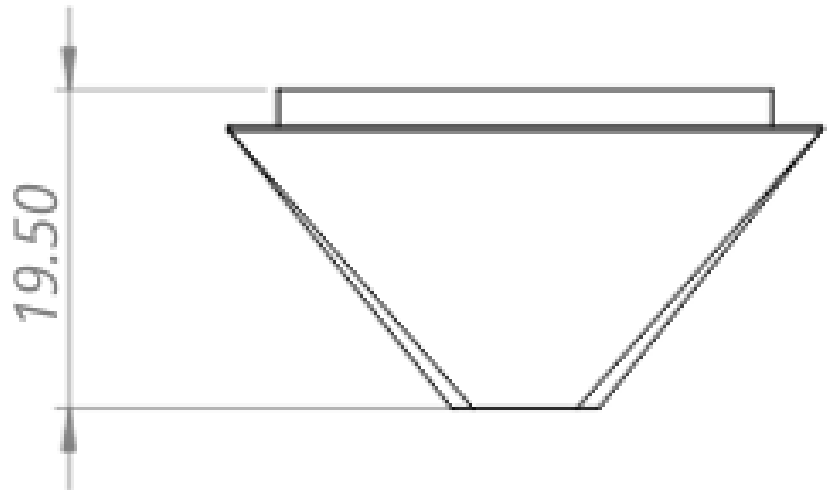
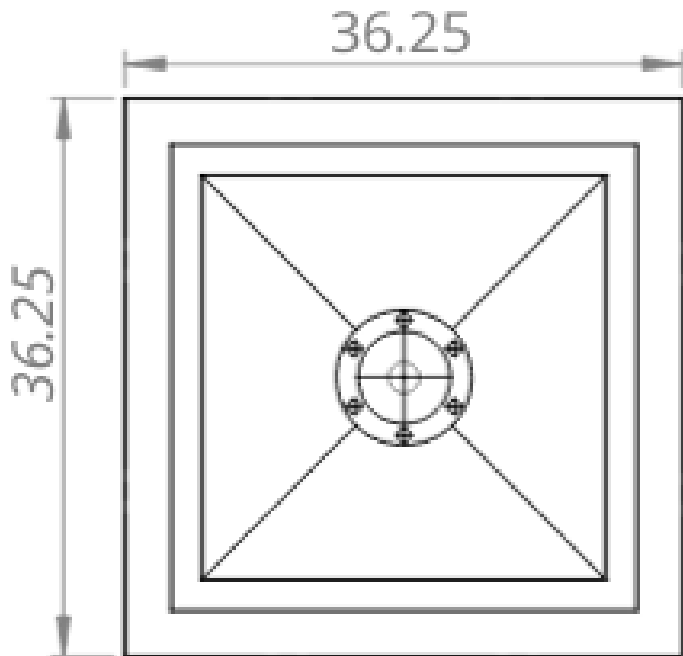
1100# maximum weight capacity. Actual amount varies depending on density of material used.

Cu. Ft., Gallons, Bushels, Liters	Weight of Container
6 Cu.Ft., 38 Dry Gal., 5 Bushels, 170 Liters	30 LBS

LIL HOP EF-6

CENTER-DISCHARGE HOPPER BIN

OUTSIDE DIMENSIONS



BIG HOP EF-44 EZ-FLOW BIN

FRONT-DISCHARGE HOPPER BIN

Translucent

Translucent to see fill levels

Sturdy

Steel frames with Food-Grade powder coat

Ease of Use

Easy to use stainless steel slide gate



** Your name/logo*
** Stand pictured is optional*

Lid

Fully enclosed & removable

FDA-Approved

FDA-approved materials/FSMA compliant/BPA-Free

Safe for Storage

Safe for outside storage down to -20°F

Customization

- Food-Grade Poly Bin
- Multiple-Use capabilities
- Customer logo option

Weight

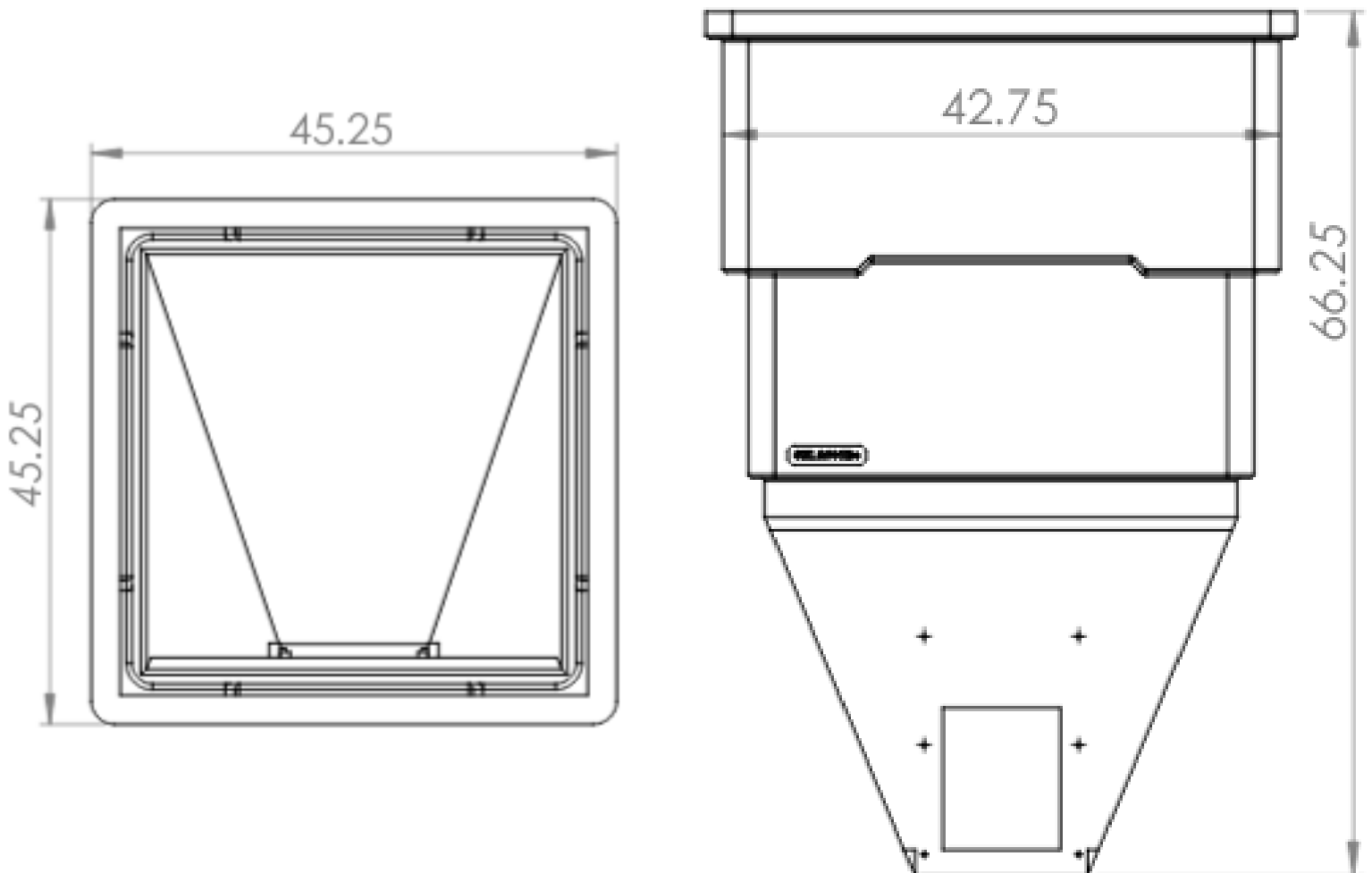
2600# maximum weight capacity. Actual amount varies depending on density of material used.

Cu. Ft., Gallons, Bushels, Liters	Weight of Container
44 Cu.Ft., 283 Dry Gal., 33 Bushels, 1246 Liters	110 LBS

BIG HOP EF-44 EZ-FLOW BIN

FRONT-DISCHARGE HOPPER BIN

OUTSIDE DIMENSIONS



LIL HOP EF-9 EZ-FLOW BIN

FRONT-DISCHARGE HOPPER BIN

Translucent

Translucent to see fill levels

Sturdy

Steel frames with Food-Grade powder coat

Ease of Use

Easy to use stainless steel slide gate



*

Lid

Fully enclosed & removable

FDA-Approved

FDA-approved materials/FSMA compliant/BPA-Free

Safe for Storage

Safe for outside storage down to -20°F



** Your name/logo
* Stand pictured is optional*

Customization

Food-Grade Poly Bin

- Multiple-Use capabilities
- Customer logo option

Weight

1100# maximum weight capacity. Actual amount varies depending on density of material used.

Cu. Ft., Gallons, Bushels, Liters	Weight of Container
9 Cu.Ft., 57 Dry Gal., 7 Bushels, 255 Liters	40 LBS

LIL HOP EF-9 EZ-FLOW BIN

FRONT-DISCHARGE HOPPER BIN

OUTSIDE DIMENSIONS

